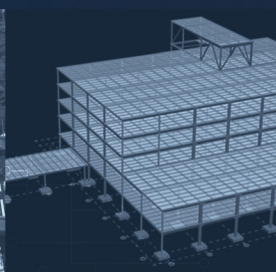


ORANGE REGIONAL MEDICAL CENTER



Forum Studio © 2016



Building Owner

Orange Regional Medical Center

Location

Middletown, New York

Orange Regional Medical Center is a 5-story, 161,000 sq. ft. medical office building which was the first field-bolted SidePlate project in the state of New York.

CHALLENGES

- Vertical braces were causing major architectural problems
- Firm budget
- Short design schedule

SOLUTIONS

- SidePlate design eliminated braces and gave an open floor plan
- SidePlate design saved \$50,000 on foundations vs. braced frame design
- Structural steel weight was 29 tons heavier than braced frame design, but CM said the cost was comparable due to reduction in pieces and faster field work.
- Building was erected in only 24 days, with time saved by eliminating welding and fit up issues with slotted brace connections.

Architect

Forum Studio

Structural Engineer

HGA
Minneapolis

General Contractor

Skanska

Fabricator

Canatal

Erector

Kenvil
Unlimited